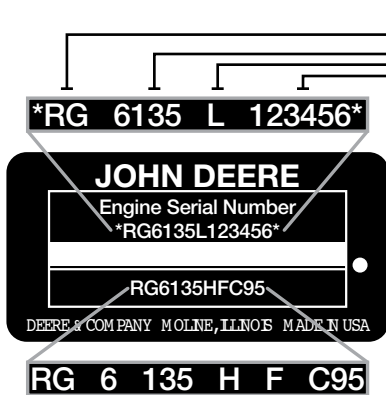


Engine identification plate



Model designation key

Below is a key for the engine models shown in this guide.

A model designated as 6135H is a 6-cylinder, 13.5-liter turbocharged and aftercooled, air-to-air engine. A model designated as a 4045T is a 4-cylinder, 4.5-liter turbocharged engine.

6135H

Indicates air intake system
Displacement in liters
Number of cylinders

Factory manufactured by

RG	Waterloo, Iowa, USA
CD	Saran, France
PE	Torreón, Mexico
PY	Pune, India

Number of cylinders and total displacement

6135	6 cylinders, 13.5 liters	4045	4 cylinders, 4.5 liters
6125	6 cylinders, 12.5 liters	4039	4 cylinders, 3.9 liters
6090	6 cylinders, 9.0 liters	5030	5 cylinders, 3.0 liters
6081	6 cylinders, 8.1 liters	3029	3 cylinders, 2.9 liters
6068	6 cylinders, 6.8 liters	4024	4 cylinders, 2.4 liters

Emissions certification

A, B, D, H, T	Non-emissions regulated
C, D, E, F, H, T	Tier 1/Stage I
D, G, H, J, K, T	Tier 2/Stage II
L, M, N, P	Tier 3/Stage III A
R, U, V, W, X, Y, Z	Interim Tier 4/Stage III B and Final Tier 4/Stage IV

Engine serial number

Emissions certification

120, 160, 220, 425	Non-emissions regulated
001, 150, 180, 250	Tier 1/Stage I
270, 275, 070, 475	Tier 2/Stage II
280, 285, 485	Tier 3/Stage III A
281, 295, 92, 93, 94, 95	Interim Tier 4/Stage III B
96, 97, 98, 99	Final Tier 4/Stage IV

New designations

94=PVX	Example: 6090HFC94
95=PSX	Example: 6090HFC95
C=Industrial	Example: 6090HFC94
G=Gen-set	Example: 6090HFC94

User type

F	OEM (John Deere Power Systems)
XX	Other letters are used to identify John Deere equipment manufacturing locations

Air intake system

D	Naturally aspirated
T	Turbocharged
A	Turbocharged and aftercooled, air-to-water
H	Turbocharged and aftercooled, air-to-air